



CATALOGUE 2018

ALCIS Neuro

SEEG
DEPTH ELECTRODES
BIOPSY NEEDLE
STEREOTAXY & DBS ACCESSORIES



Manufacturing / Order / Delivery

ALCIS Neuro

Bât. Bioparc, Témis Santé - 2, rue du Professeur Milleret
25000 Besançon - France
Tél. : 33 (0)3 81 61 69 93 - Fax : 33 (0)3 81 53 47 65
e-mail: contact@alcis.net

Sales contact

Jean-Philippe BARBAULT

Tél. 06 87 73 97 37
e-mail : jpbarnault@alcis.net

Compilation of technical forms as following

Depth electrodes	3 pages
Coagulation system	1 page
Extension cables	1 page
Guidance screw	1 page
Short guidance screws	1 page
SEEG setup ancillaries (screwdriver, drills, wrench, stylets, stoppers, ...)	3 pages
Coagulation electrodes	1 page
Rulers	1 page
Brain biopsy needles	1 page
Bone fiducial and anchoring bolts	1 page
Stereotaxy accessories (screw caps, guides, drills, stoppers ...)	8 pages
DBS & Parkinson accessories	2 pages

Manufacturing / Order / Delivery

ALCIS Neuro

Bât. Bioparc, Témis Santé - 2, rue du Professeur Milleret
25000 Besançon - France
Tél. : 33 (0)3 81 61 69 93 - Fax : 33 (0)3 81 53 47 65
e-mail: contact@alcis.net

Sales contact

Jean-Philippe BARBAULT

Tél. 06 87 73 97 37
e-mail : jpbarnault@alcis.net

Range 2069-EPC

ALCIS intracerebral **Depth Electrodes** are multi-contacts electrodes, intended to pre-surgical epilepsy diagnosis, Stereo-ElectroEncephaloGraphy recording (**SEEG**), **short stimulation** and **thermocoagulation** as a **therapeutic alternative to conventional epilepsy surgery**.

Depth electrodes - Range 2069-EPC

Patient / user comfort ► *tip contact, distal part perfectly smooth.*

Minimum Implantation Length (MIL) reduced ► *10 mm behind last contact, reduce exceed of the skin when associated to short guidance screw.*

Validated for coagulation ► *easier and safer through connection box.*

Contacts configurations ► *from 5 to 18.*

Other features:

Platinum iridium contacts & wires ► *Better signal & recording / MRI adapted.*

Sterile unit packaging with traceability label ► *Eases patient file follow-up.*

Distal OD ≤ **0.8 mm** / Proximal OD ≈ 1.5 mm ► *Less invasive / good mechanical strength.*

Sliding seal ► *Adjustment of depth insertion eased with Alcis ruler.*

High resistance to bending, doesn't break.



2 contacts types:

Type	Standard electrodes Type C	High resolution electrodes Type E
Ring	Standard ring contacts	Short ring contacts
Contacts	2 mm	1 mm
Tip	2 mm distal contact	2 mm distal contact

Designed to be used with Alcis guidance screw from range 2023-VG and 2023-VG-C.

Compatible with Alcis accessories range **2023 / 2036 / 2069** (cf. IFU).

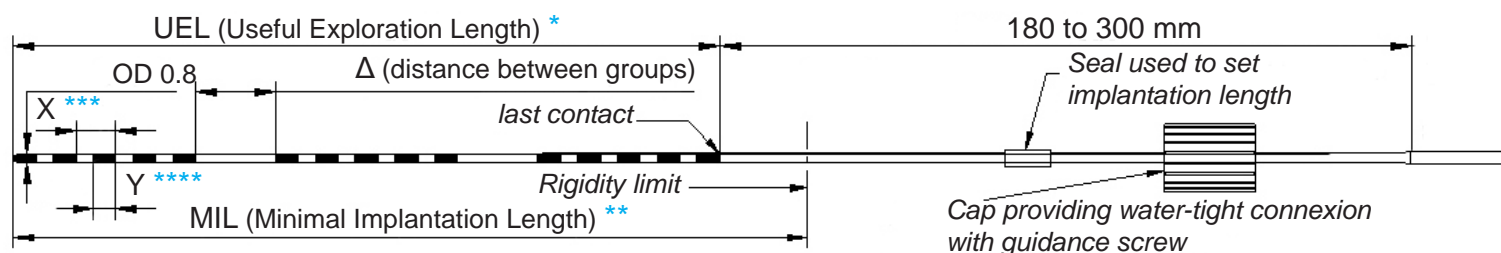
Unitary sterile packaging.

Single use.

CE 1014 marked.

Medical Devices. Availability of these products might vary from a given country or region to another, as a result of specific local regulatory approval or clearance requirements for sale in such country or region. Always refer to the information on packaging's labels and instructions for use (if applicable). Alcis reserves the right, without prior notice, to modify the products in order to improve their quality. **WARNING:** Applicable laws restrict these products to sale by or on the order of a physician. All the references numbers mentioned on this document are CE or CE1014 marked according to European council directive 93/42/EEC on medical devices and its relatives, unless specifically identified as "NOT CE MARKED." Manufacturer: ALCIS – Besançon, France.

Range 2069-EPC



* UEL = Useful Exploration Length, distance between the first and the last contact.

** MIL = Minimum Implantation Length, minimum length between the target and the proximal edge of the guidance screw.

*** X = Contacts steps.

**** Y = Ring contacts size.

Range 2069-EPC Type C

*** Contact step
3.5 or 4.0 mm

**** Y = 2 mm

References	Nb of contacts	Δ (mm)	UEL * (mm)	MIL ** (mm)	Avail.
2069-EPC-05C-35	5	-	16	26	S
2069-EPC-08C-35	8	-	26.5	36.5	S
2069-EPC-10C-35	10	-	33.5	43.5	S
2069-EPC-12C-35	12	-	40.5	50.5	S
2069-EPC-15C-35	15	-	51	61	S
2069-EPC-18C-35	18	-	61.5	71.5	S
2069-EPC-18C-40	18	-	70	80	S
2069-EPC-15C-35-3G-07	3 x 5	7	62	72	S
2069-EPC-15C-35-3G-11	3 x 5	11	70	80	S
2069-EPC-18C-35-3G-11	3 x 6	11	80.5	90.5	S
2069-EPC-ccC-pp-gG-Δ	Custom made - please contact us				

Range 2069-EPC Type E - high resolution electrodes

*** Contact step
2.0 mm

**** Y = 1 mm

References	Nb of contacts	UEL * (mm)	MIL ** (mm)	Avail.
2069-EPC-06E-20	6	12	22	R
2069-EPC-09E-20	9	18	28	R
2069-EPC-12E-20	12	24	34	R
2069-EPC-15E-20	15	30	40	R
2069-EPC-18E-20	18	36	46	R
2069-EPC-ccE-pp-gG-Δ	Custom made - please contact us			

Avail.: Product availability, S: Stock, R: on Request

Medical Devices. Availability of these products might vary from a given country or region to another, as a result of specific local regulatory approval or clearance requirements for sale in such country or region. Always refer to the information on packaging's labels and instructions for use (if applicable). ALCIS reserves the right, without prior notice, to modify the products in order to improve their quality. WARNING: Applicable laws restrict these products to sale by or on the order of a physician. All the references numbers mentioned on this document are CE or CE1014 marked according to European council directive 93/42/EEC on medical devices and its relatives, unless specifically identified as "NOT CE MARKED." Manufacturer: ALCIS - Besançon, France.

ALCIS **micro-macro** intracerebral **Depth Electrodes** are multi-contacts electrodes, intended to pre-surgical epilepsy diagnosis, designed for Stereo-ElectroEncephaloGraphy recording (**SEEG**), **short stimulation** and **thermocoagulation** as a **therapeutic alternative to conventional epilepsy surgery**.

2069-EPC Micro Macro

Two scales recording ► *micro and macro.*

Coagulation mastered on macro contacts with display ► *impedance driving, eased and secured via connection box.*

Patient / user comfort ► *distal part perfectly smooth, Minimal Implantation Length (MIL) reduced (10 mm after the last macro contact).*

Other features:

Platinum iridium contacts & wires ► *Better signal collection / MRI compatible.*

Distal OD ≤ 0.8 mm / proximal OD ≈ 1.5 mm ► *Less invasive / good mechanical strength.*

Compatible with ALCIS standard implantation, connection and coagulation accessories from ranges **2023** and **2069** (refer to IFU).

Single use device / CE₁₀₁₄ marked.

Packaged in sterile individual pouch.

Consult us to identify the compatible recording solutions.

Micro-Macro range:

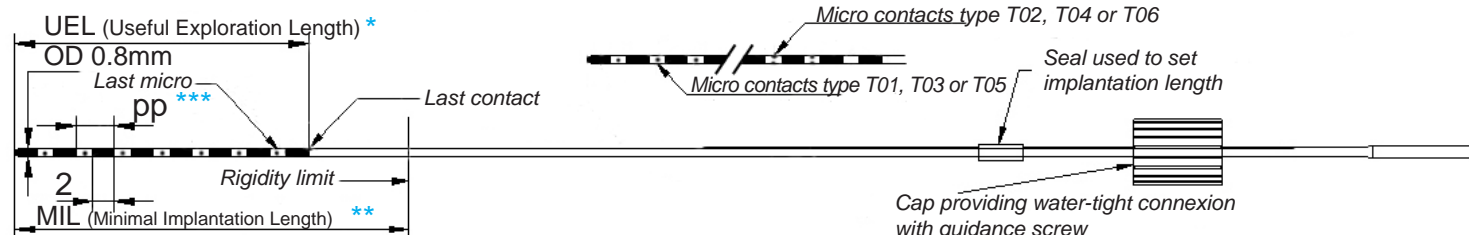
References	Macro contacts	Micro contacts	Micro size	Micro contacts positioning	UEL * (mm)	MIL ** (mm)	Avail.
2069-EPC-5C9-35T02	5	9	37 µm		16	26	R
2069-EPC-5C9-35T06	5	9	17 µm	3 at 120°	16	26	R
2069-EPC-8C9-35T06	8	9			26.5	36.5	R
Other micro contacts configurations possible - consult us							
2069-EPC-aXb-ppTxx	1 to 9	1 to 9	37, 20 or 17 µm	1 3 at 120°	-	-	R

a = number of macro contacts

b = number micro contacts

Txx = micro contacts type

Avail.: Product availability - S = Stock, R = on Request



* UEL = Useful Exploration Length, distance between the first and the last contact.

** MIL = Minimum Implantation Length, minimum length between the target and the proximal edge of the guidance screw.

*** pp = 3.5mm = macro contacts step.

Medical Devices. Availability of these products might vary from a given country or region to another, as a result of specific local regulatory approval or clearance requirements for sale in such country or region. Always refer to the information on packaging's labels and instructions for use (if applicable). ALCIS reserves the right, without prior notice, to modify the products in order to improve their quality. WARNING: Applicable laws restrict these products to sale by or on the order of a physician. All the references numbers mentioned on this document are CE or CE₁₀₁₄ marked according to European council directive 93/42/EEC on medical devices and its relatives, unless specifically identified as "NOT CE MARKED." Manufacturer: ALCIS – Besançon, France.

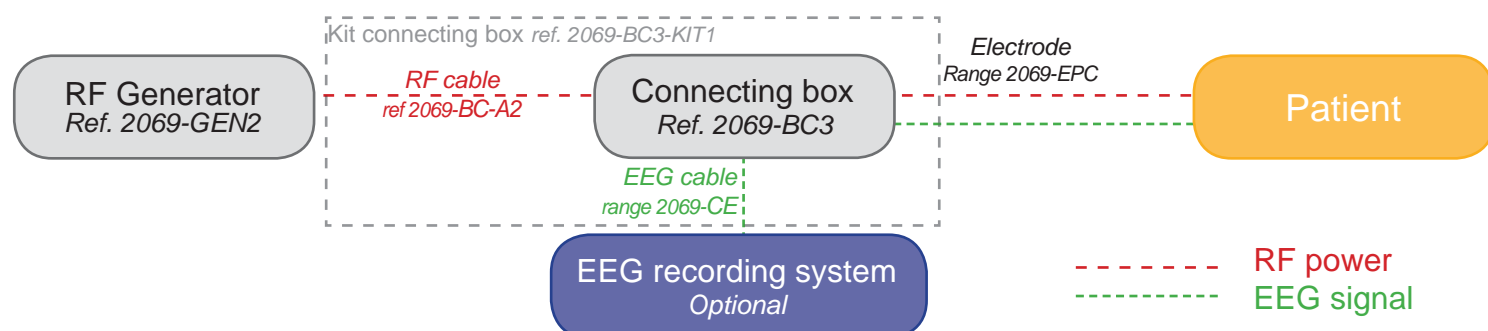
The **Alcis** coagulation depth electrodes are **intended to perform thermo-coagulation "in-situ"**, in association with a RF generator, as therapeutic alternative to conventional epilepsy surgery (especially for patients for who conventional surgery is excluded).

Alcis proposes a **Global Solution for Coagulation** that includes the following devices:

- RF Generator (ref. 2069-GEN2)
- Kit Connecting box (ref. 2069-BC3-KIT1)
- Depth coagulation electrode (range 2069-EPC), for technical information, refer to 2069-EPC-FT technical form.

System ref. ALN-2069-CS

Please note that Alcis do not provides the EEG recording system. Ask for compatibility information.



Kit Connecting Box (ref. 2069-BC3-KIT1)

The kit Connecting box **CE** marked includes:

- a connecting box (ref. 2069-BC3),
- a RF cable (ref. 2069-BC-A2),
- a EEG cable (ref. 2069CE-18c-150-B-FB5),
- a testing device,

- a battery charger with 2 batteries,
- the IFU of the kit.

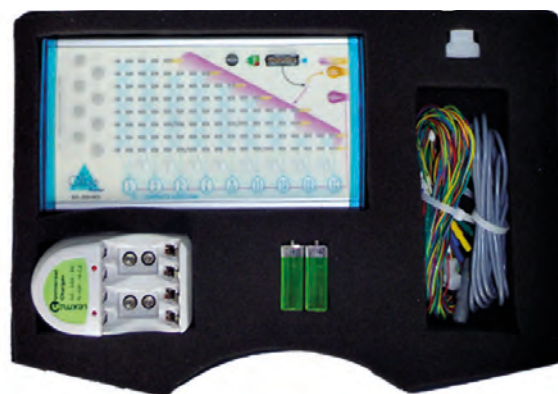
The kit is provided in a plastic briefcase.

The Alcis connecting box allows, **in user friendly and a safe way to:**

- avoid misconnections,
- select the type of depth electrode connected,
- select the couple of contacts to coagulate,
- control directly after coagulation the EEG signal.
(requires to connect a EEG recording system)

CE marked, non sterile, non sterilizable, reusable device.

Compliant to IEC 60601-1 (2007 / AC2010), IEC 60601-2-26 (2004), IEC 60601-2-2 (2009), electrical standards.



RF Generator (ref. 2069-GEN)



A special setup for the thermo-coagulation with Alcis depth coagulation electrodes (ref. 2069-EPC-Ax) is required.

Alcis includes in its global coagulation system the RF generator RFG-1B from Cosman with this special setup.

CE0050 marked, non sterile, non sterilizable, reusable device.

Medical Devices. Availability of these products might vary from a given country or region to another, as a result of specific local regulatory approval or clearance requirements for sale in such country or region. Always refer to the information on packaging's labels and instructions for use (if applicable). Alcis reserves the right, without prior notice, to modify the products in order to improve their quality. **WARNING:** Applicable laws restrict these products to sale by or on the order of a physician. All the references numbers mentioned on this document are CE or CE1014 marked according to European council directive 93/42/EEC on medical devices and its relatives, unless specifically identified as "NOT CE MARKED." Manufacturer: ALCIS – Besançon, France. Exception for RF Generator CE0050, manufacturer COSMAN – USA.

Alcis Extension Cables are intended to create a link from intracerebral depth electrodes (range 2069-EPC) to a EEG recording system.

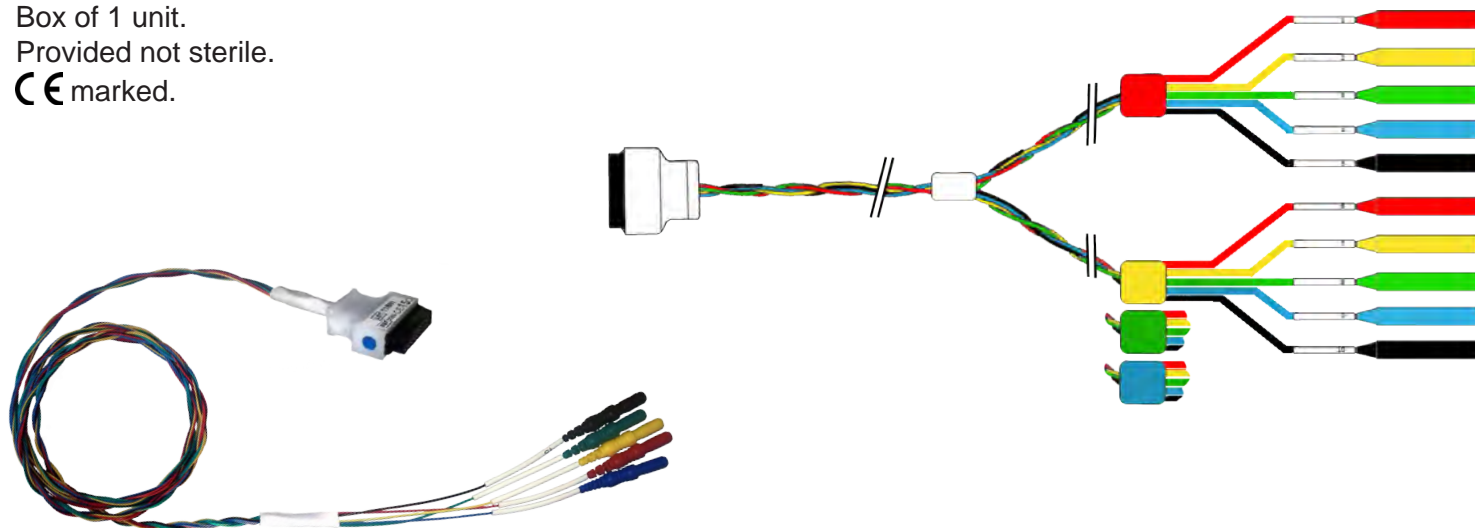
References	Number of contacts	Length	Plug (recorder side)	Cable specifications	Packaging
2069-CE-05c-150-B-FB5	5	150 cm	Insulated plugs Ø 1,5 mm FB5 = minimal center-to-center connection distance : 5 mm	B = braided	Unitary Non Sterile
2069-CE-08c-150-B-FB5	8				
2069-CE-10c-150-B-FB5	10				
2069-CE-12c-150-B-FB5	12				
2069-CE-15c-150-B-FB5	15				
2069-CE-18c-150-B-FB5	18				
2069-CE-XXc-III(-B-FB5)*	Custom made - please contact us				

*to define reference, replace:

- III by the length in cm,
- XX by the number of contacts.

- A coding, integrated to the connection casing helps to reduce the risk of connection errors.
- A marker (blue dot) enables a quick retrieval of connection direction.
- A color coding helps to quickly identify the wire order.
- Compatible with removable link 2023-CE-L2 to secure the electrode connection with the cable.

Box of 1 unit.
Provided not sterile.
CE marked.



Removable link 2023-CE-L2

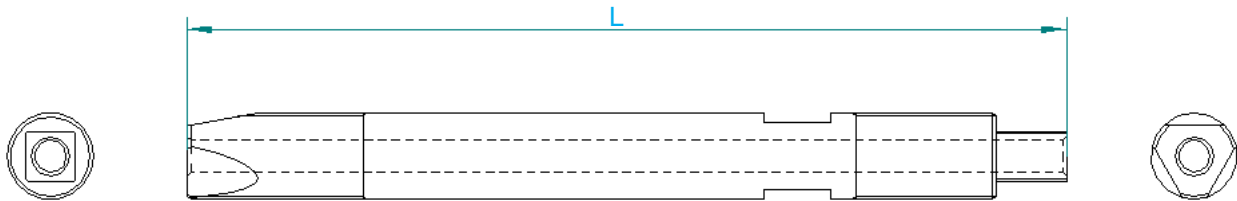
Removable link is intended to strengthen the connection between an extension cable and an electrode.

Ref. 2023-CE-L2
Pouch of 5 reusable units.
Provided not sterile.
CE marked.



Medical Devices. Availability of these products might vary from a given country or region to another, as a result of specific local regulatory approval or clearance requirements for sale in such country or region. Always refer to the information on packaging's labels and instructions for use (if applicable). Alcis reserves the right, without prior notice, to modify the products in order to improve their quality. WARNING: Applicable laws restrict these products to sale by or on the order of a physician. All the references numbers mentioned on this document are CE or CE1014 marked according to European council directive 93/42/EEC on medical devices and its relatives, unless specifically identified as "NOT CE MARKED." Manufacturer: ALCIS – Besançon, France.

► This range of product allows to implant depth electrodes with a maximum of guidance effect.



Reference	Length (mm) (L)	Material	Packaging
2023-VG-15	15	Titanium alloy TiAl6V4 ISO 5832-3	Box of 10 sterile units (individual pouch)
2023-VG-20	20		
2023-VG-25	25		
2023-VG-30	30		
2023-VG-35	35		

- Calibrated for ID 2.5mm guide.
- Self-threading extremity for direct fixation in a diameter 2.1 mm osseous hole.
- Adapted for MRI location.

- Two external flats for extraction with Alcis wrench **2023-CL**.
- use exclusively with alcis depth electrode range **2069-EPC**.
- set exclusively with alcis screwdriver range **2023-TO**.
- realise with join and cap a water-tight connexion with electrode.

- Ethylene oxide sterilized.
- Single use.
- CE 1014.



► **Short guidance screw** realises with **cap** and **join** integrated to the screw a **tight fixing of the electrode**. It allows a **minimum obstruction on external patient cranium**.

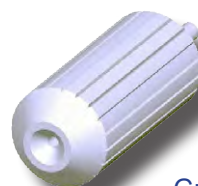
► **Each short guidance screw is provided with:**

- A guide helping to ensure the realization of a pre-hole with a stylet range 2023-ST through trajectory given by the guidance screw,
- A thin cap limiting space above guidance screw,
- A retainer ring maintaining electrode closest to cap.

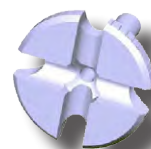
- use exclusively with Alcis depth electrode range **2069-EPC**.
- set exclusively with Alcis screwdriver **2023-TO-C-III** and ALCIS gripper **2023-PIN** (see **2023-AVG-C-FT** technical form).
- In the event of difficulty for the screwing / unscrewing of the cap, use exclusively screwdriver Alcis **2023-TO-BC**.
- Self-threading extremity for direct fixation in a 2.1 mm diameter osseous hole.
- MRI and MEG compatible.
- Ethylene oxide sterilized.
- Single Use.
- **CE**1014.



Short guidance screw



Guide



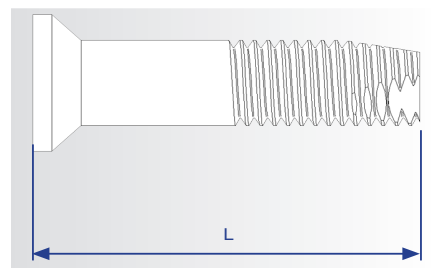
Cap



Retainer



Reference	Length L (mm)	Material	Packaging
2023-VG-C-10	10	• Titanium alloy TiAl6V4 ISO 5832-3	Box of 10 sterile units
2023-VG-C-15	15		
2023-VG-C-20	20	• Silicone • Polymer	(individual pouch including: screw, guide, cap and retainer)
2023-VG-C-25	25		
2023-VG-C-30	30		



Screwdriver 2023-TO



For standard guidance screw:

Reference	Length L (mm)	Materials	Packaging
2023-TO-020	20	Stainless steel (body)	Unitary non sterile
2023-TO-160	160	Delrin (handle)	

For short guidance screw:

Reference	Length L (mm)	Materials	Packaging
2023-TO-C-020	20	Stainless steel (body)	Unitary non sterile
2023-TO-C-160	160	Delrin (handle)	

- EXCLUSIVELY DEDICATED TO SET ALCIS GUIDANCE SCREW RANGE 2023-VG,
- Calibrated for ID 2.5 mm stereotactic guide (except length 20),
- Utilizable with Alcis depth-stop 2023-BU-25-UU or 2036-BU-25-RU to facilitate control of screwing depth,
- Supplied non sterile,
- Re-usable device designed for steam sterilization till 134°C,
- **CE** marked.

Wrench 2023-CL



Reference	Useful opening (mm)	Materials	Packaging
2023-CL	1.9	Stainless steel	Unitary non sterile
2023-CL-C	3.5		

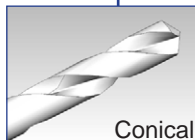
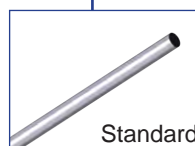
- Designed to remove alcis guidance screw range 2023-VG and short guidance screw range 2023-VG-C.
- Elbowed for better use.
- Supplied non sterile,
- Re-usable device designed for steam sterilization till 134°C,
- **CE** marked.

Medical Devices. Availability of these products might vary from a given country or region to another, as a result of specific local regulatory approval or clearance requirements for sale in such country or region. Always refer to the information on packaging's labels and instructions for use (if applicable). Alcis reserves the right, without prior notice, to modify the products in order to improve their quality. WARNING: Applicable laws restrict these products to sale by or on the order of a physician. All the references numbers mentioned on this document are CE or CE1014 marked according to European council directive 93/42/EEC on medical devices and its relatives, unless specifically identified as "NOT CE MARKED." Manufacturer: ALCIS – Besançon, France.

Drill 2023-FO




Reference	Total length (mm)	Cutting length (mm)	Distal shape	Proximal end	Materials	Packaging
2023-FO-200	200	20	Straight	Standard	Stainless steel	Unitary non sterile
2023-FO-III(-C1-H06)	140		Straight or Conical	Standard or H6		
	200					
	250					



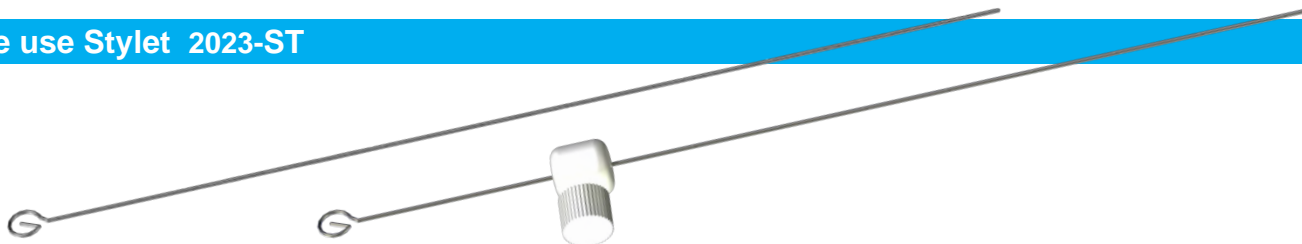
to determine the reference, replace III by the wanted length (in mm), add -C1 for conical shape, add -H6 for H6 proximal end.

Other total length III in the limit of 250 mm realizable on request

- DESIGNED TO REALISE Ø2.1mm OSSEOUS HOLE,
- Compatible with ID 2.5 mm stereotactic guide,
- Compatible with Alcis depth stop 2023-BU-25-UU or 2036-BU-25-RU to ease control of drilling depth,
- Other designs available see 2036-AS-FT technical form.
- Provided non sterile,
- Reusable device designed for steam sterilization till 134°C,
- 1014 marked.

Medical Devices. Availability of these products might vary from a given country or region to another, as a result of specific local regulatory approval or clearance requirements for sale in such country or region. Always refer to the information on packaging's labels and instructions for use (if applicable). Alcis reserves the right, without prior notice, to modify the products in order to improve their quality. WARNING: Applicable laws restrict these products to sale by or on the order of a physician. All the references numbers mentioned on this document are CE or CE1014 marked according to European council directive 93/42/EEC on medical devices and its relatives, unless specifically identified as "NOT CE MARKED." Manufacturer: ALCIS – Besançon, France.

Single use Stylet 2023-ST

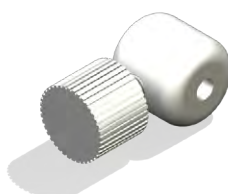


Reference	Minimum useful length (mm)	OD (mm)	Stopper	Materials	Packaging
2023-ST-AB	120	0.8	Yes	Stainless steel (stylet)	Box of 10 sterile units, (individual pouch)
2023-ST-SB			No	Polymer (stopper)	
2023-ST-xB(-III)	Custom made (length up to 250 mm) - please contact us				

- DESIGNED TO REALISE A 0.8mm OD FIRST HOLE TO EASE THE DEPTH ELECTRODE INTRODUCTION.
- Soften distal end.
- Supplied with adjustable depth-stop 2023-BU-08-UU to ease the control of insertion depth.

- Ethylene oxide sterilized.
- Single use.
- **CE**1014 marked.

Single use Stopper 2023-BU-xx-UU



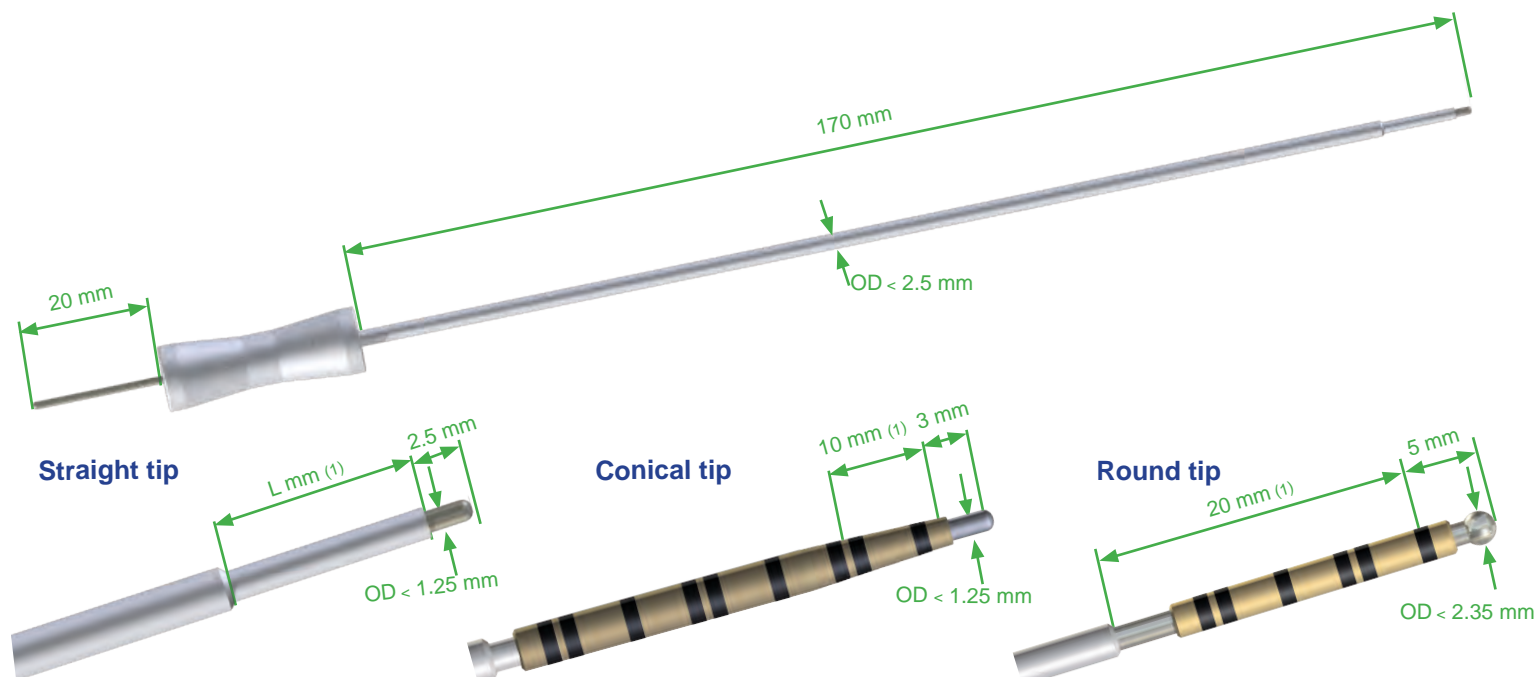
Reference	Instrument OD (mm)	Compatible instruments	Packaging
2023-BU-08-UU	0.8	stylet	Box of 10 sterile units (individual pouch)
2023-BU-25-UU	2.3 to 2.5	drill, screwdriver, coagulation electrode	

- Fits on all instruments with compatible OD: 0.8mm or 2.3 to 2.5 mm (refer to reference),
- Allows to control an secure insertion depth of the instruments,

- Etylene oxide sterilized,
- Single use,
- **CE**1014 marked.

Medical Devices. Availability of these products might vary from a given country or region to another, as a result of specific local regulatory approval or clearance requirements for sale in such country or region. Always refer to the information on packaging's labels and instructions for use (if applicable). ALCIS reserves the right, without prior notice, to modify the products in order to improve their quality. WARNING: Applicable laws restrict these products to sale by or on the order of a physician. All the references numbers mentioned on this document are CE or CE1014 marked according to European council directive 93/42/EEC on medical devices and its relatives, unless specifically identified as "NOT CE MARKED." Manufacturer: ALCIS – Besançon, France.

Range 2023-EC

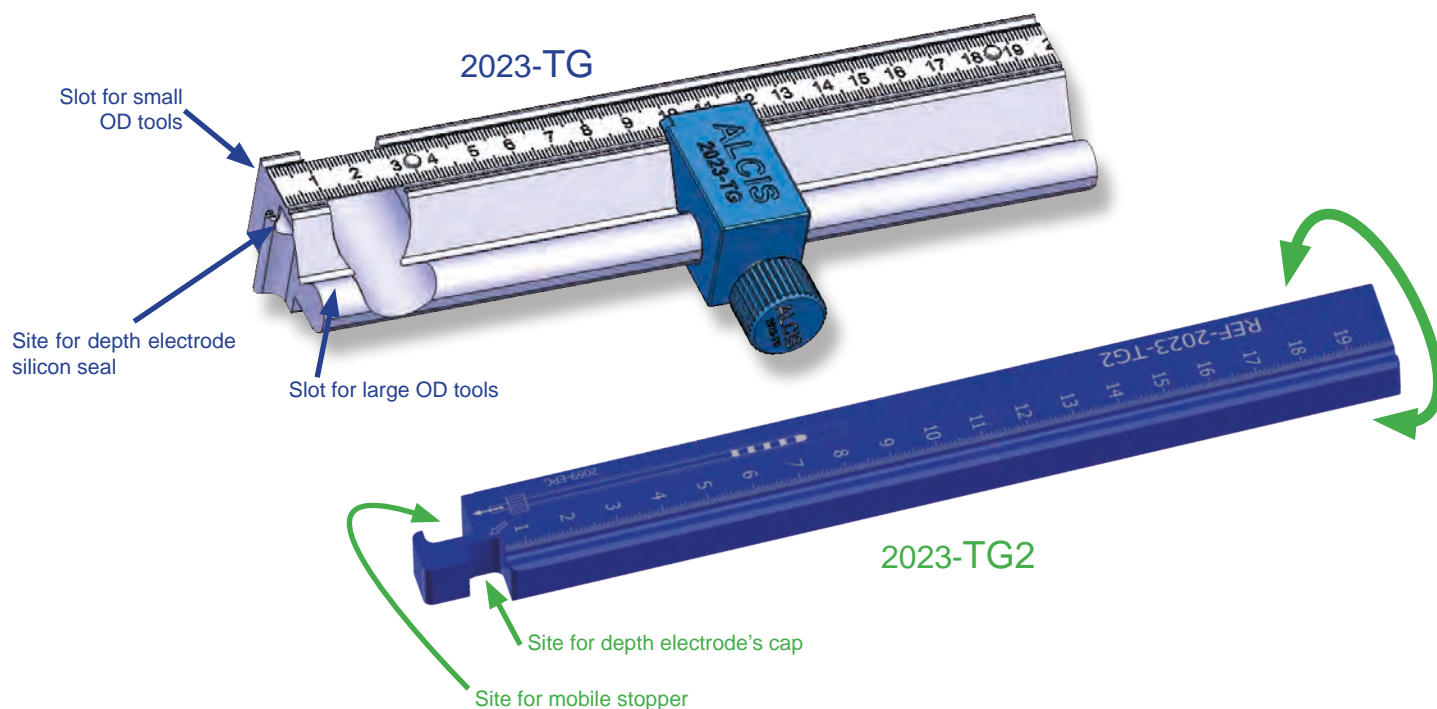


Reference	Shape	Insulated Distal Length (mm) (1)	Active Length (mm)	Active OD	Materials	Packaging	
2023-EC-10-STD	Straight	10	2.5	1.20mm	Stainless steel (body) Polymere (handle and insulating part)	Unitary Non sterile	
2023-EC-20-STD		20					
2023-EC-30-STD		30					
2023-EC-10-CNQ	Conical	10	3.0	2.35mm			
2023-EC-20-B24	Round	20	5.0				



- MONOPOLAR ELECTRODE intended to open the dura mater or skin (round tip) by thermocoagulation.
- Compatible with ID 2.5 mm stereotactic guides.
- Compatible with single use Alcis depth stop 2023-BU-25-UU or 2036-BU-25-RU in order to ease the control of depth insertion length.
- Provided non sterile.
- Reusable material designed for steam sterilization up to 134°C.
- **CE**1014 marked.

Medical Devices. Availability of these products might vary from a given country or region to another, as a result of specific local regulatory approval or clearance requirements for sale in such country or region. Always refer to the information on packaging's labels and instructions for use (if applicable). Alcis reserves the right, without prior notice, to modify the products in order to improve their quality. WARNING: Applicable laws restrict these products to sale by or on the order of a physician. All the references numbers mentioned on this document are CE or CE1014 marked according to European council directive 93/42/EEC on medical devices and its relatives, unless specifically identified as "NOT CE MARKED." Manufacturer: ALCIS - Besançon, France.



Reference	Materials	Packaging
2023-TG	Fortal, Stainless steel, Polymers	Unitary, non sterile
2023-TG2	Polymer	

2023-TG

Graduated ruler

Allows to control the insertion depth of tools (drill, coagulation electrode, screwdriver).

Allows to set the implantation length of depth electrodes.

The device has a notch to position the silicon seal of the electrode.

Just maintain the seal in position and pull on the electrode to adjust its implantation length.

Ruler length: 200 mm.

Maximal measure length: 175 mm.

Accuracy: 0.75 mm.

Measurement constant: 0.25 mm.

- Compatible with ALCIS tools from ranges 2023, 2036 and 2069.
- Provided non sterile.
- Reusable devices, compatible with steam sterilization up to 134°C.
- **CE**1014 marked.

2023-TG2

SEEG Graduated ruler

Allows to control on one side the insertion depth of the tools (drill, coagulation electrode, screwdriver).

Allows to control on the other side the implantation length of the depth electrodes.

The electrode is directly put with its protective tube on the ruler. Just pull the electrode to adjust the implantation length.

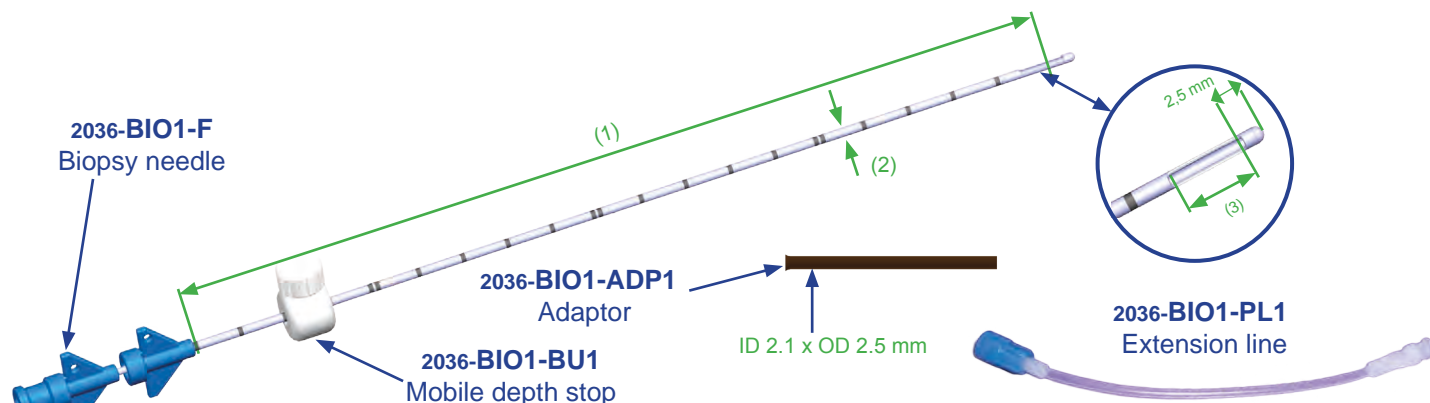
Ruler length: 200 mm.

Maximal measure length: 200 mm.

Accuracy: 0.75 mm.

Measurement constant: 0.25 mm.

Biopsy needle 2036-BIO



Reference	Useful Length l (mm) (1)	OD (mm) type t (2)	Window length xx (mm) (3)	Materials	Packaging	Avail.
2036-BIO- t -F xx - l -B1	190	< 2.1 $t=1$	5	Stainless steel body	Box of 5 sterile units (individual pouch)	R
	250	< 2.5 $t=2$	8			R
			10	Polymer handle		S
Other dimensions on request						R

Reference example: 2036-BIO2-F10-250-B1 (biopsy needle with diameter 2.5mm, 250mm long and a 10mm window).

2036-BIO1-F08-190-B1 (biopsy needle with diameter 2.1mm, 190mm long and a 8mm window).

Avail.: Product availability, S: Stock, R: on Request

Brain biopsy kit

Ref. 2036-BIO-kit- t -F xx - l -B1

Designation	Reference	Qty	Packaging	
Biopsy needle	2036-BIO- t -F dd - l	1	Box of 5 sterile kits (individual pouch)	
Diameter adaptor*	2036-BIO-ADP1	1		
Extension line	2036-BIO-PL1	1		
Mobile depth stop	2036-BIO-BU1	1		

*adaptor included only with type 1 needles

Reference example: 2036-BIO-kit2-F10-250-B1 (box of 5 kits of biopsy needles - Useful OD 2.5mm, 250mm long with a 10mm window).

- Requires a previous skull bone hole (Alcis drill available, cf. range 2036-FO or 2023-FO).
- The **adaptor** 2036-BIO-ADP1 allows the compatibility with stereotactic guides of OD 2.5mm.
- The **mobile stop** ALCIS 2036-BIO-BU1 allows (if necessary) the control of the biopsy depth.
- Proximal port** (female luer lock) for the connection of a suction device, with marks of the window position (open/close).
- Extension line 2036-BIO-PL1 to facilitate the suction.
- Markings** to indicate the length to the biopsy needle.
- Sterilization by ethylene oxide / **single use** / CE 1014 marked.

Inside STYLET for biopsy needle



Reference	$L1$ (mm)	$OD1$ (mm)	Material	Packaging	Avail.
2036-B1-BIO-STY1	≈ 250	1,65	Stainless steel	Box of 10 sterile units (individual pouch)	R
Other dimensions on request					

- Use only with the biopsy needles ref. 2036-BIO1-FII-190.
- Sterilization by ethylene oxide / **Single use** / CE 1014 marked.


Medical Devices. Availability of these products might vary from a given country or region to another, as a result of specific local regulatory approval or clearance requirements for sale in such country or region. Always refer to the information on packaging's labels and instructions for use (if applicable). Alcis reserves the right, without prior notice, to modify the products in order to improve their quality. WARNING: Applicable laws restrict these products to sale by or on the order of a physician. All the references numbers mentioned on this document are CE or CE1014 marked according to European council directive 93/42/EEC on medical devices and its relatives, unless specifically identified as "NOT CE MARKED." Manufacturer: ALCIS - Besançon, France.

Range 2023-VG-CM

ALCIS short guidance screws can be used as bone fiducial during surgeries performed with robots. These screws are available in several length in order to adapt to the patient's anatomy.



Reference	Length	Materials	Packaging
2023-VG-CM-10	10 mm	Titanium alloy TiAl6V4 ISO 5832-3	Box of 10 unitary pouch Sterile EO
2023-VG-CM-15	15 mm		
2023-VG-CM-20	20 mm		
2023-VG-CM-25	25 mm	Silicon	
2023-VG-CM-30	30 mm		

Single use /  1014 marked.

Accessories

Obturator cap

2023-BO-VG-C Cap to close the inner channel of the screw, apart from surgical steps.
Sterile EO, single use, box of 10 pouches of 10 units.
Nylon



Marking cap

2036-BM-VG-C Marking cap; MRI, XRay or hybrid MRI/XRay.
Non sterile, reusable, pouch of 5, non-sterilizable
POM



Implantation/Explantation ancillaries



Drill ref. 2023-FO-100-C1
For osseous drilling.





Suppressive guiding stopper ref. 2036-BU-25-RU-GSxx
For the control of drilling depth.



Screwdriver ref. 2023-TO-C-020
For the implantation of screws.



Wrench ref. 2023-CL-C
For the explantation of screws.

- Unitary packaging - non sterile.
- Reusable devices, designed for steam sterilization up to 134°C.
-  or  1014 marked.

Alcis short guidance screw from range 2023-VG-C are recorded by Medtech SAS company as «Compatible Device».

Medical Devices. Availability of these products might vary from a given country or region to another, as a result of specific local regulatory approval or clearance requirements for sale in such country or region. Always refer to the information on packaging's labels and instructions for use (if applicable). Alcis reserves the right, without prior notice, to modify the products in order to improve their quality. WARNING: Applicable laws restrict these products to sale by or on the order of a physician. All the references numbers mentioned on this document are CE or CE1014 marked according to European council directive 93/42/EEC on medical devices and its relatives, unless specifically identified as "NOT CE MARKED." Manufacturer: ALCIS - Besançon, France.

Range: 2036

The PERCUTANEOUS SCREW and their ACCESSORIES contribute to :

- a **reproducible fixation** of stereotactic frame such as Leksell (using adaptation range 2051), Talairach one or similar (set with screw 2036-VP + spacer 2036-ENT or 2051-ENT),
- the **realization of MRI imaging** (frameless imaging) by using:
 - (1) screw 2036-VPx2 + marking cap 2036-BM
 - (2) only screw 2036-VPx2-M (IRM marker + RX integrated)
- the **scanner imaging without any artefact and with the location of screw position** (imaging with or without frame):
 - (1) screw 2036-VPx + spacer with marker 2036-ENT2 ou 2051-EV3
 - (2) only screw 2036-VPx-M seule (MRI + RX marker integrated)

(1): imaging fusion easier due to similar positions of MRI (2036-BM) and RX (2036-ENT2 /2051-EV3) markers.

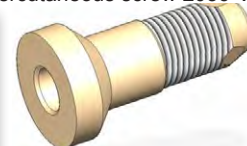
(2): marker constituted of a solution visible with MRI and SCANNER.

Percutaneous screw 2036-VP

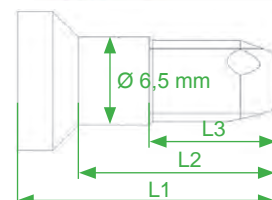
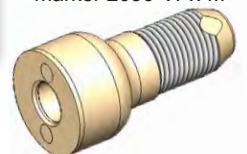
Reference	Designation	Integrated marker	L1 (mm)	L2 (mm)	L3 (mm)	Material	Packaging
2036-VPa2	VP Adult	No	19.0	14.5	9.0	Polymer with superior physic capacity	20 sterile units box packaged by pouch of 4 units
2036-VPE2	VP Child		16.5	12.5	6.5		
2036-VPa2-M	VP Adult	Yes*	19.0	13.0	9.0		
2036-VPE2-M	VP Child		16.5	10.5	6.5		


*visible by MRI and SCANNER imaging.

Percutaneous screw 2036-VPx



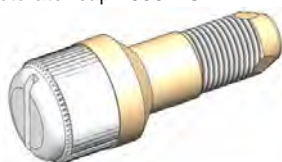
Percutaneous screw with marker 2036-VPx-M



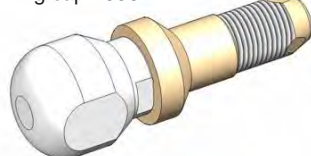
- SET EXCLUSIVELY WITH A SCREWDRIVER ALCIS 2036-TO-III in a osseous hole Ø 6 mm realizable with a drill such as ALCIS 2036-FO-III type
- 2036-VPx: do not generate any MRI neither SCANNER artefact
- Ethylene oxide sterilized
- Single use
-  1014 marqué

Cap 2036-B (for percutaneous screw 2036-VPx)


Obturator cap 2036-BO



Marking cap 2036-BM



Reference	Designation	Material	Packaging
2036-BO	Obturator cap	Polymer	Pouch of 20 non sterile units
2036-BM	Marking cap		Pouch of 4 non sterile units

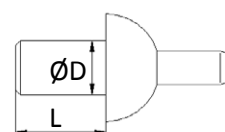
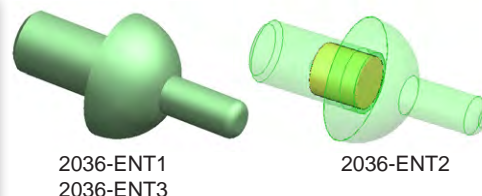
- SET EXCLUSIVELY WITH A ALCIS PERCUTANEOUS SCREW 2036-VP.
- Obturator caps 2036-BO :
 - allows the protection of the screw impression between the periods of frame fitting,
 - are supplied **non sterile** and **single use**.
- Marking cap 2036-BM :
 - allows MRI localization, are filled (Ø5 x 5 mm) with a contrast solution,
 - are supplied **non sterile** - **No stérilisation required** for use with MRI (no process validated).
- Marqué .

Medical Devices. Availability of these products might vary from a given country or region to another, as a result of specific local regulatory approval or clearance requirements for sale in such country or region. Always refer to the information on packaging's labels and instructions for use (if applicable). ALCIS reserves the right, without prior notice, to modify the products in order to improve their quality. WARNING: Applicable laws restrict these products to sale by or on the order of a physician. All the references numbers mentioned on this document are CE or CE1014 marked according to European council directive 93/42/EEC on medical devices and its relatives, unless specifically identified as "NOT CE MARKED." Manufacturer: ALCIS - Besançon, France.

Spacers 2036-ENT (for percutaneous screw 2036-VPx)

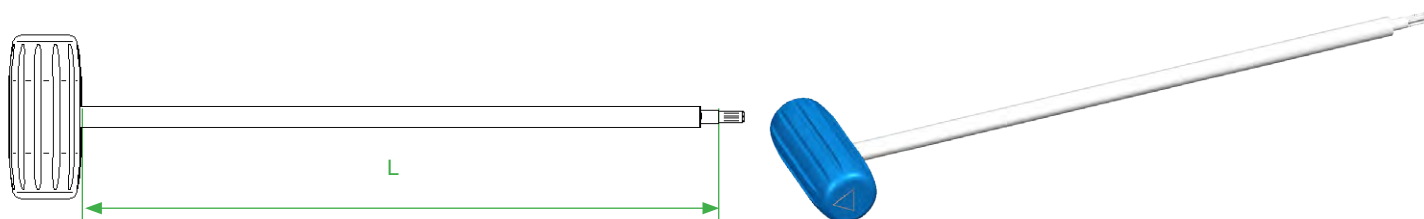
Reference	L (mm)	Ø D (mm)	Material	Packaging
2036-ENT1	10	6	Polymer	Pouch of 4 non sterile units
2036-ENT2			Polymer with Titanium marker (Ø5 x 5 mm)	
2036-ENT3			Stainless steel	

Other dimensions realizable on request



- TO BE USE EXCLUSIVELY WITH PERCUTANEOUS SCREW ALCIS 2036-VP,
- Proximal side designed to be use with stereotactic frame equipped with guide or screw pillar compatible with centring Ø D and length L,
- Supplied non sterile - Reusable material designed for autoclave sterilisation till 134°C,
- **CE** marked.

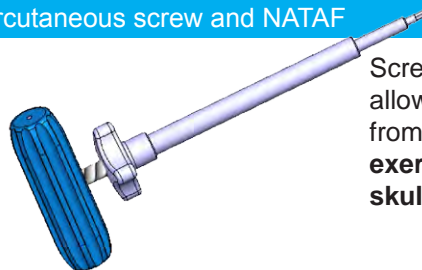
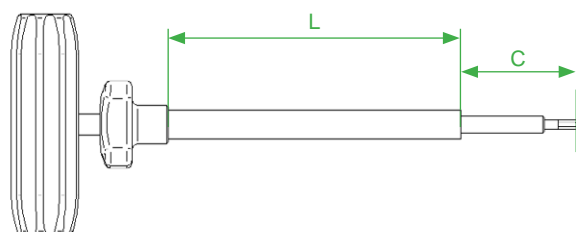
Screwdriver 2036-TO (accessory for percutaneous screw)



Reference	L (mm)	Material	Packaging
2036-TO-240	240	Polymer	Unitary non sterile
2036-TO-080	80		
2036-TO-III	Other length (///) realizable on request		

- TO BE USE EXCLUSIVELY WITH THE ALCIS PERCUTANEOUS SCREW 2036-VPx,
- Proximal side designed for use with stereotactic frames provided with compatible guides (Ø D and centering length L),
- Supplied non sterile - Reusable material designed for autoclave sterilisation till 134°C,
- Marqué **CE**.

Screwdriver 2036-TO-EXT-60 (accessory for percutaneous screw and NATAF adaptation kit range 2051)



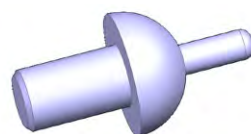
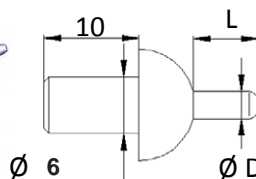
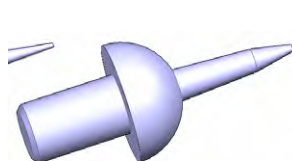
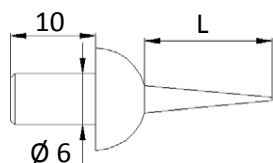
Screwdriver provided with a system allowing to **extract the screwdriver** from the head of the screw **without exerting stress on the patient's skull**.

Reference	Dimensions (mm)	Material	packaging
2036-TO-EXT-60	Useful length (L): 240 Extraction stroke (C): from -7 to +38	Stainless steel (body) Polymer (handle)	Unitary non sterile

- TO BE USE EXCLUSIVELY WITH ALCIS percutaneous screw 2036-VP and Nataf adaptation kit (range 2051),
- Supplied non sterile - Reusable material designed for autoclave sterilisation till 134°C,
- **CE** marked.

Medical Devices. Availability of these products might vary from a given country or region to another, as a result of specific local regulatory approval or clearance requirements for sale in such country or region. Always refer to the information on packaging's labels and instructions for use (if applicable). ALCIS reserves the right, without prior notice, to modify the products in order to improve their quality. WARNING: Applicable laws restrict these products to sale by or on the order of a physician. All the references numbers mentioned on this document are CE or CE1014 marked according to European council directive 93/42/EEC on medical devices and its relatives, unless specifically identified as "NOT CE MARKED." Manufacturer: ALCIS - Besançon, France.

Range: 2036



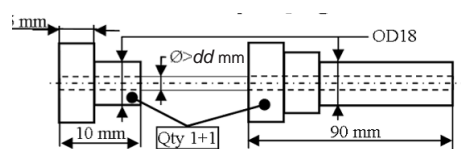
2036-PMP-15		2036-PMP-12		2036-PMC	
Reference	L (mm)	Ø D (mm)	Material	Packaging	
2036-PMP-15	15	2.9	Stainless steel	Pouch of 4 non sterile units	
2036-PMP-12	12				
2036-PMC-07	07				
2036-PMC-11	11				
2036-PMC-14	14				

- Designed to be placed at the distal extremity of micrometric stereotactic frame screw, they contribute to the frame fixing with patient head.
Type PMP : Percutaneous Monobloc Point
Type PMC : Surgical Monobloc Point*
* the PMC needs a Ø 2.9 mm osseous hole realizable with ALCIS drill 2036-FO-250-29.
- Proximal side designed to be used with stereotactic frame equipped with guide or screw pillar compatible with centring of Ø 6 mm and length 10 mm
- Supplied non sterile
- Re-usable material designed for autoclave sterilization till 134°C
- CE₁₀₁₄ marked.

Drilling Gun 2036-CPX

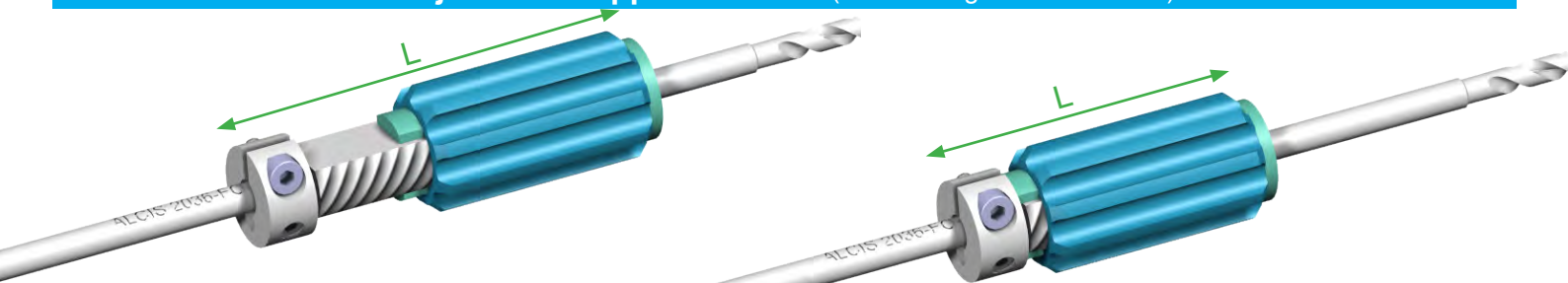
Reference	L (mm)	Ø D (mm)	Material	Packaging
2036-CP1-025	10 / 90	2.5	PEEK	Unitary non sterile
2036-CP1-060	10 / 90	6.0		

Other dimensions realizable on request



- Adaptable on OD 2.5 or 6 mm instruments (drill 2036-FO or 2036-FO)
- Allows the control the trajectory of insertion of these instruments
- CE₁₀₁₄ marked - Supplied non sterile
- Re-usable material designed for autoclave sterilization till 134°C

Adjustable stopper 2036-BRU (for drill range 2036-FO-III-XX)



Reference	L (mm)	Ø D (mm)	Material	Packaging
2036-BRU-1-60-RU	70 to 100	6	Stainless steel	Unitary non sterile
2036-BRU-1-60-RU		2.5		

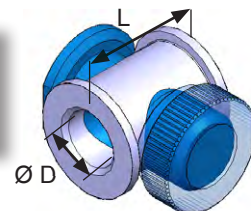
Other dimensions realizable on request

- Stopper supplied without drill
- Adaptable on OD 6 mm instruments (drill 2036-FO)
- Allows the control of insertion depth of these instruments
- Supplied non sterile - Re-usable material designed for autoclave sterilization till 134°C
- CE₁₀₁₄ marked.

Medical Devices. Availability of these products might vary from a given country or region to another, as a result of specific local regulatory approval or clearance requirements for sale in such country or region. Always refer to the information on packaging's labels and instructions for use (if applicable). ALCIS reserves the right, without prior notice, to modify the products in order to improve their quality. WARNING: Applicable laws restrict these products to sale by or on the order of a physician. All the references numbers mentioned on this document are CE or CE₁₀₁₄ marked according to European council directive 93/42/EEC on medical devices and its relatives, unless specifically identified as "NOT CE MARKED." Manufacturer: ALCIS - Besançon, France.

Range: 2036

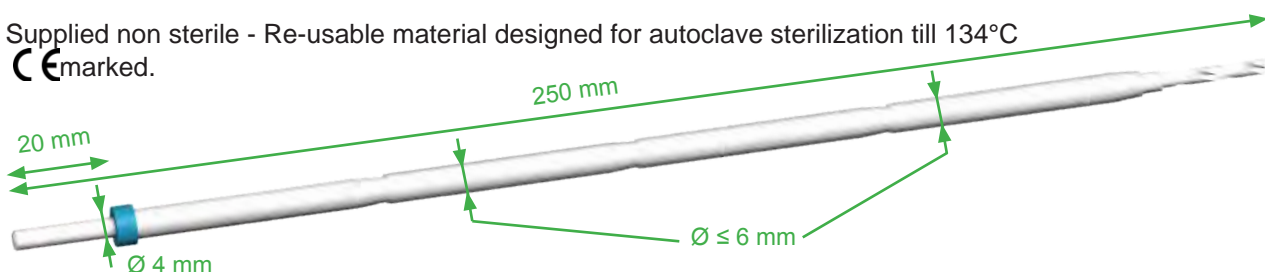
Reference	L (mm)	Ø D (mm)	Material	Packaging
2036-BU-60-RU	13	> 6,00	Acier	Unitary non sterile
2036-BU-25-RU	10	> 2,5	Inoxydable	



- Adaptable on OD 2.5 or 6 mm instruments (drill 2036-FO, ...)
- ALLOWS THE CONTROL OF INSERTION DEPTH OF THESE INSTRUMENTS
- Supplied non sterile - Re-usable material designed for autoclave sterilization till 134°C
- **CE**marked.

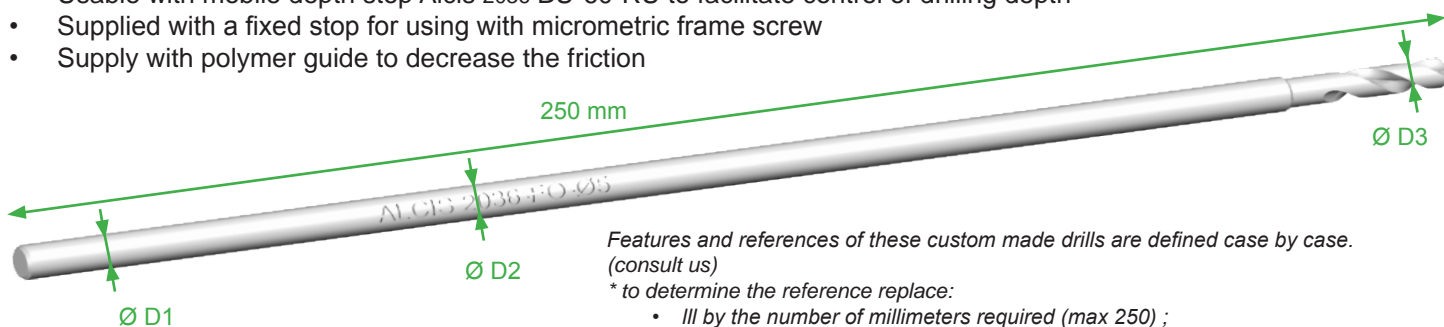
Drills 2036-FO

- Supplied non sterile - Re-usable material designed for autoclave sterilization till 134°C
- **CE**marked.



Reference	Length (mm)	body Ø (mm)	Cutting length (mm)	cutting Ø (mm)	Material	Packaging
2036-FO-250-29	250	6	20	2.9	Stainless steel and polymer	Unitary non sterile
2036-FO-250-40				4.0		

- Compatible with an ID ≥ 6 mm stereotactic guide.
- Usable with mobile depth stop Alcis 2036-BU-60-RU to facilitate control of drilling depth
- Supplied with a fixed stop for using with micrometric frame screw
- Supply with polymer guide to decrease the friction



Features and references of these custom made drills are defined case by case. (consult us)

*to determine the reference replace:

- III by the number of millimeters required (max 250) ;
- z by the number which correspond to cutting diameter and length required.

Reference	L (mm)	Ø D1 shank (mm)	Ø D2 body (mm)	Ø D3 cutting (mm)	Cutting Lg	Cutting	Material	Packaging	
2036-FO-III-T1/z	III	Type 1 : cutting Ø = body Ø = shank Ø					Stainless steel	Unitary non sterile	
2036-FO-III-T1/1		2,45							
2036-FO-III-T1/2		2,5			14	Straight			
2036-FO-III-T2/z		Type : cutting Ø # body Ø = shank Ø							
2036-FO-III-T2/3		Ø 6		Ø 5		20			120°
2036-FO-III-T2/4				Ø 5,2					

Autres dimensions réalisables sur demande

- Adaptable length within 250 mm / Drilling Ø marked on product.

Medical Devices. Availability of these products might vary from a given country or region to another, as a result of specific local regulatory approval or clearance requirements for sale in such country or region. Always refer to the information on packaging's labels and instructions for use (if applicable). Alcis reserves the right, without prior notice, to modify the products in order to improve their quality. WARNING: Applicable laws restrict these products to sale by or on the order of a physician. All the references numbers mentioned on this document are CE or CE1014 marked according to European council directive 93/42/EEC on medical devices and its relatives, unless specifically identified as "NOT CE MARKED." Manufacturer: ALCIS - Besançon, France.

RANGE : 2051

This range of product (associated with existing material) allows:

to set up,
to carry out **imaging sequences with markers of fusion**,
to remove then to reset in a precise and rapid way
a **Leksell frame on a patient**.

- ▶ **ability of carrying out stereotaxic surgery interventions in a split way**
- ▶ **possibility of carrying out the procedure on several places**

- Usable with **standard Leksell frame basis** (no modification necessary),
- Compatible with different **scanner localizer box** (Leksell, Brainlab...),
- Compatible with realization of examinations such as **arteriography, scanner and MRI** (minimized artifacts),
- Adapted for **radiotherapy**,
- Frameless or frame based MRI realizable with a possibility of **later fusion** (through markers screw),
- Optimization of **fusions of images MRI and Scanner** through the **markers** associated with screws.

Frame setup and imaging

- **Frame setup on patient using KIT Adaptation fixing part (2051-KAFIX) & basis of LEKSELL frame.**
- **Percutaneous screw placement (Alcis range 2036-VP) using percutaneous screw KIT (2051-KVIS-2036) & Screwable spacer Kit (Alcis range 2051-KEV - ≠ standard according to needs).**
- **Diagnosis intervention and imaging realization - ventriculography - scanner - MRI....**

Possible with markers localized to the screws for further 2 types of imaging fusion optimization.

- **Frame removing after lengths measurement.**

The screws can remain in place on patient several weeks (- 30 days).

Planning / location
Later intervention(s)

- **Frame resetting(s) on patient for surgical intervention purpose.**

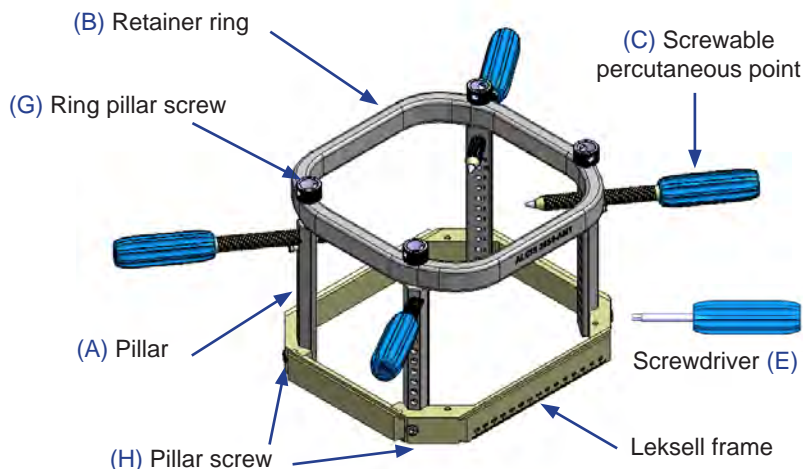
By example treatments such as intracranial splitted radiotherapy in stereotaxic conditions.

- **Frame removing (as many time than necessary)**
- **Removing of screws.**

RANGE : 2051

Kit Adaptation fixing part
Ref. **2051-KAFIX-(P60-PL1)** containing:

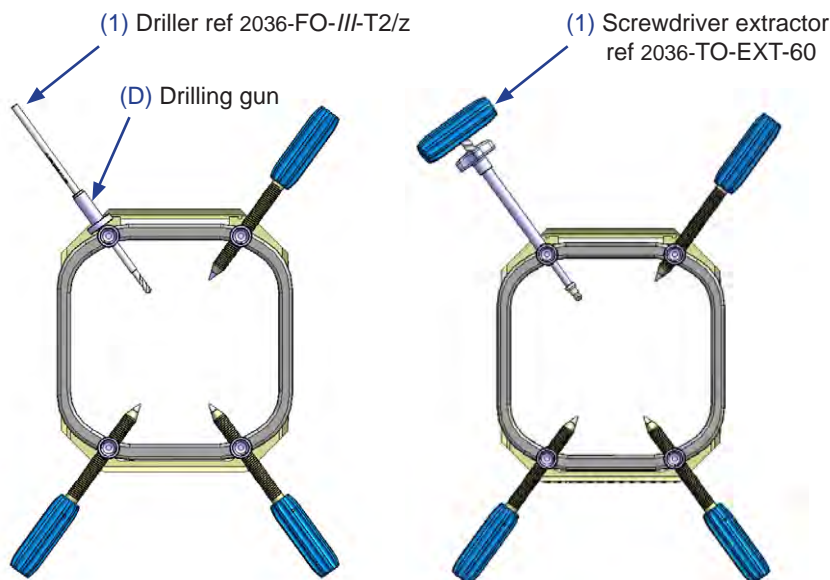
Reference	Material	Qty
2051-AM1	Retainer ring (B)	1
2051-AM1-PI1	Pillar (A)	4
2051-PPV	Screwable (C) percutaneous point	4
2051-TO	Screwdriver (E)	1
2051-AM1-PL1-003	Pillar screw (H)	4
2034-KG-002	Ring Pillar screw (G)	4



Percutaneous screw Kit 2036 / 2051 Ring
Ref. **2051-KVIS-2036** containing:

Reference	Material	Qty
2051-AM1-CP60	Drilling gun (D)	1
2036-FO-III-T2/4	Drill length 250/Ø6 / Ø5.2 cut (1)	1 (up to user)
2036-FO-III-T2/3	Drill length 250/Ø6 / Ø5.2 cut (1)	1
2036-BUR1-06-RU	Zadjustable and (1) mobile stopper Ø6	1
2036-TO-EX	Percutaneous screw screwdriver extractor (1)	1

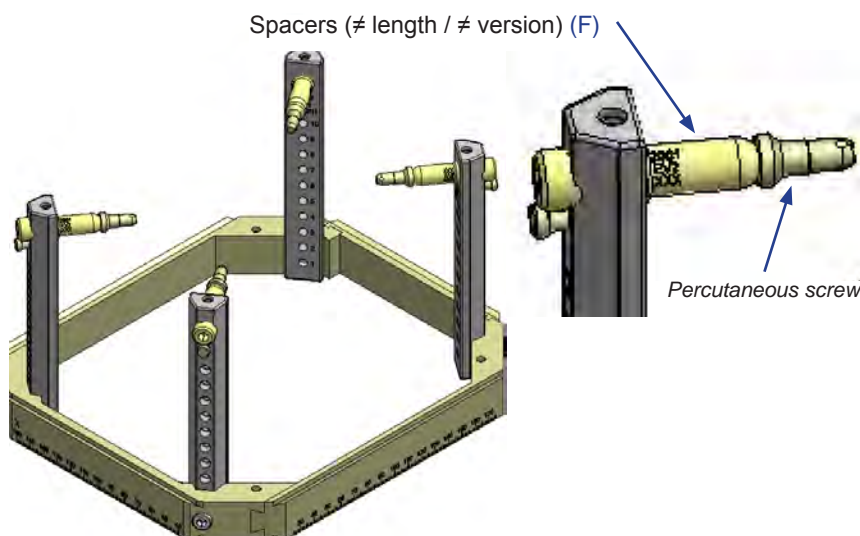
(1) For range 2036 parts please refer to technical form
2036-AS-FT



Various Kits spacers (F) are proposed:


- Screwable spacers type 1 Kit
(hollow) Ref **2051-KEV1-(C1)**
- Screwable spacers type 2 Kit
(monobloc) Ref **2051-KEV2-(C1)**
- Screwable spacers type 1 Kit
(monobloc interating marked)
Ref **2051-KEV3-(C1)**

Cf. page 4 for detail and composition.




RANGE : 2051

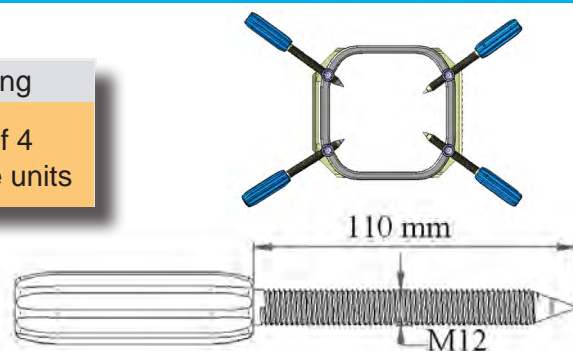
Reference	Designation	Material	Packaging
2051-AM1	Retainer ring (1)	Anodized aluminium alloy	Unitary non sterile Pouch of 4 non sterile units
2051-KG-002	Ring-pillar screw	stainless steel	
2051-AM-PI	Pillar (2)	Anodized aluminium alloy & polymer	
2051-AM1-PI1-003	Pillar screw	Stainless steel	

- (1) Use exclusively with pillar **2051-AM1-PI1** and rings-pillar-screws **2034-KG-002**
- (2) Use exclusively with framework de Leksell, pillar-screws **2051-AM1-PI1-003** and screwdriver **2051-TO**
- Re-usable material designed for autoclave sterilization till 134°C.
-  marked.

Screwable percutaneous point 2051-PPV (C)


Reference	Material	Packaging
2051-PPV	Polymer (handle) Stainless steel (percutaneous point)	Pouch of 4 non sterile units

- To use exclusively with pillar **2051-AM1-PI1**
- Re-usable material designed for autoclave sterilization till 134°C.
-  marked.



Screwdriver 2051-TO (E)


Reference	Il (mm)	Material	Packaging
2051-TO	45	Stainless steel (shank) Polymer (handle)	non sterile unit

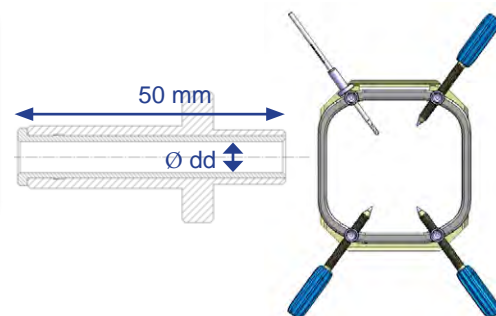
- Use exclusively with pillar **2051-AM1-PI1-003** and screwable spacer range **2051-EV** to allow their clamping / screwing, release / unscrewing
- Re-usable material designed for autoclave sterilization till 134°C.
-  marked.



Drilling gun 2051-PPV (D)

Reference	Material	Packaging
2051-AM-CP-60	Polymer (handle) Stainless steel (percutaneous point)	Pouch of 4 non sterile units
2051-AM-CP-dd	other Ø dd available on request please contact us	

- Use exclusively with pillar **2051-AM1-PI1**, screwdriver range **2036-TO-EXT** (Ø adapted),
- Re-usable material designed for autoclave sterilization till 134°C.
-  marked.



RANGE : 2051

Kit Braces Within range type 1 (hollow) Ref. 2051-KEV1-(C1)

containing

Reference	Length (mm)	Qty
2051-EV1-035	35	4
2051-EV1-050	50	4
2051-EV1-065	65	4
2051-EV1-080	80	4
2051-EV1-095	95	2
2051-EV1-110	110	2

Kit Braces Within range type 2 (monobloc) Ref. 2051-KEV2-(C1)

containing

Reference	Length (mm)	Qty
2051-EV2-035	35	4
2051-EV2-050	50	4
2051-EV2-065	65	4
2051-EV2-080	80	4
2051-EV2-095	95	2
2051-EV2-110	110	2

Kit Braces Within range type 3 (monobloc integrating marker) Ref. 2051-KEV3-(C1)

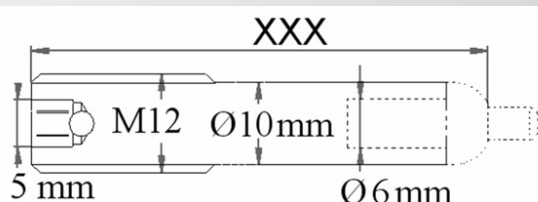
containing

Reference	Length (mm)	Qty
2051-EV3-035	35	4
2051-EV3-050	50	4
2051-EV3-065	65	4
2051-EV3-080	80	4
2051-EV3-095	95	2
2051-EV3-110	110	2

Spacer within range 2051-EV

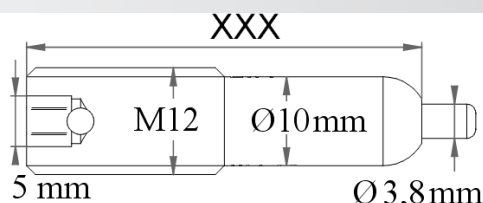
Allow (during imaging sequences realization) by "interfacing" between percutaneous screw and Leksell frame pillar; to **solidarize the frame** with of patient cranium and to locate a scanner marker.

2051-EV1 Screwable spacer



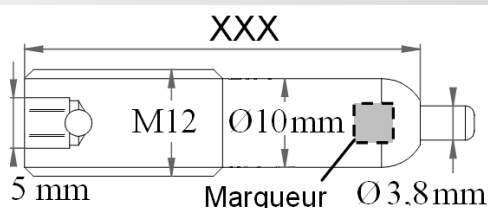
- Are assembled with the spacers of the range 2036.
- To use exclusively with pillar 2051-AM1-PI1 and the screwdriver 2051-TO.
- No imaging artefact

2051-EV2 Screwable monobloc spacer

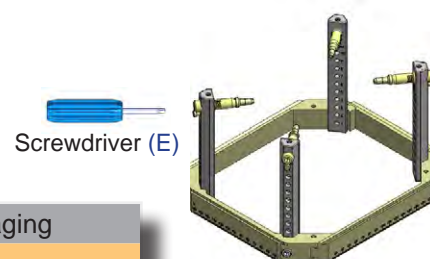


- To use exclusively with pillar 2051-AM1-PI1 and the screwdriver 2051-TO.
- No imaging artefact


2051-EV3 Screwable monobloc spacer containing marker




- use exclusively with pillar 2051-AM1-PI1 and screwdriver 2051-TO.
- RX detectable

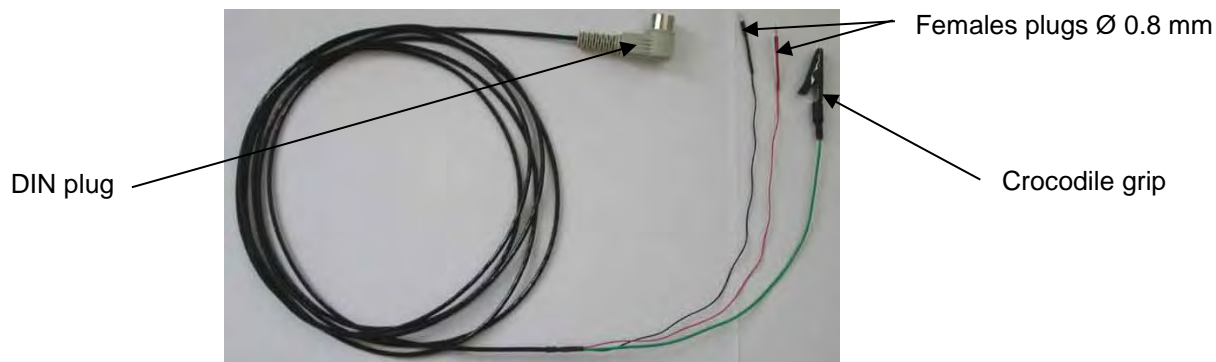


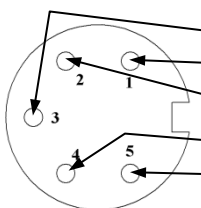
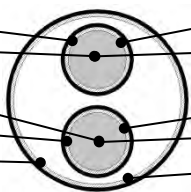
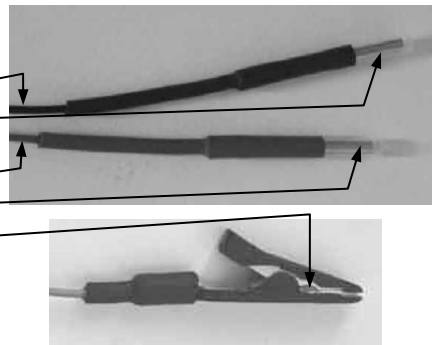
Reference	Useful length xxx (mm)	Material	Packaging
2051-EV1-xxx	035	Polymer	Pouch of 2 or 4 non sterile units
2051-EV1-xxx	050		
	065		
2051-EV1-xxx	080	Polymer with titanium marker (Ø 5 x 5 mm)	
	095		
	110		

- Re-usable material designed for autoclave sterilization till 134°C.
-  marked.

	<h1>CONNECTION CABLE FOR MICROELECTRODE</h1>		Technical Form
			PARKINSON
	Range : 2029-10-000		EDITION 2029-10-FT6 Page 1 / 1

• CONNECTING CABLE FOR MICROELECTRODE : 2029-10



Recording machine connector	Cable section	Microelectrode connector	Packaging
1 DIN male plug 5 ways 60°	3 meters length	2 females plugs Ø 0,8 mm 1 crocodile grip (cable earth)	Unitary packaged in sterile pouch and then grouped in 5 units box.
			
<p>DIN 1 —————> Black conductor (female plug Ø 0.8 mm) DIN 2 —————> Red conductor (female plug Ø 0.8 mm) DIN 3 —————> Black shield DIN 4 —————> Red shield DIN 5 —————> Cable shield (Crocodile grip)</p>			

- Ethylene oxide sterilized
- Single use
- **CE 1014** Marked

Order / Delivery

ALCIS Neuro

2 rue Paul Milleret - 25000 Besançon - France
Tél. +33 (0)3 81 61 69 93 - Fax +33 (0)3 81 53 47 65
@ contact@alcis.net - W www.alcis.net

Medical Devices. Availability of these products might vary from a given country or region to another, as a result of specific local regulatory approval or clearance requirements for sale in such country or region. Always refer to the information on packaging's labels and instructions for use (if applicable). ALCIS reserves the right, without prior notice, to modify the products in order to improve their quality. WARNING: Applicable laws restrict these products to sale by or on the order of a physician. All the references numbers mentioned on this document are CE or CE1014 marked according to European council directive 93/42/EEC on medical devices and its relatives, unless specifically identified as "NOT CE MARKED." Manufacturer: ALCIS – Besançon, France.



ALCIS SARL

ACCESSORIES FOR MICROELECTRODE

Range : 2029-20 et 2029-30

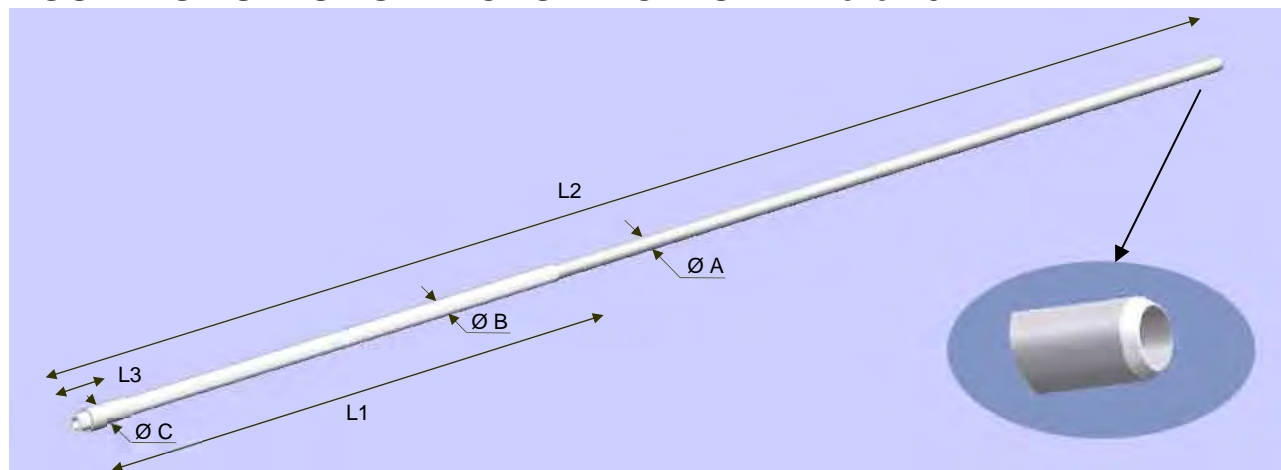
Technical Form

PARKINSON

EDITION 2029-AM-FT8c

Page 1 / 1

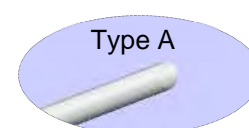
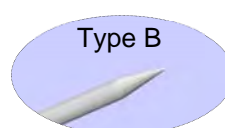
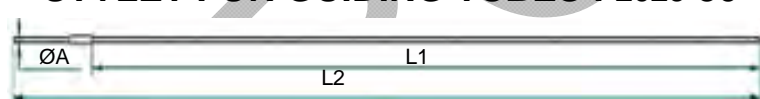
• GUIDING TUBES FOR MICROELECTRODE : 2029-20



Reference	ØA (mm)	ØB (mm)	ØC (mm)	L3 (mm)	L2 (mm)	L1 (mm)	ID (mm)	Packaging
2029-20- A -120-(50)	1,2	1,5	2	5	120	50	0,8 < Ø < 0,9	10 sterile units box (individual packaging)
2029-20- A1 -160-(140)				10	160	140		
2029-20- A1 -170-(140)					170			
2029-20- A1 -210-(140)					210			
2029-20- A1 -210-(50)			50					
2029-20- B -120-(50)		2	2,5	5	120	50		
2029-20- B1 -210-(140)				10	210	140		
2029-20- B1 -210-(50)						50		
Other dimensions realizable on request								

- Proximal part calibrated for insertion in a Ø B hole
- Distal part tipped
- Ethylene oxide sterilized / **Single use** / **CE** 0459 marked

• STYLET FOR GUIDING TUBES : 2029-30



Reference	L2 (mm)	L1 (mm)	OD A (mm)	Packaging	
2029-30- A -237-(210)	~237	211,5	0,8	10 sterile units box (individual packaging)	
2029-30- B -237-(210)		213			
2029-30- A -237-(160)		171.5			
2029-30- B -237-(160)		173			
2029-30- A -237-(170)		161.5			
2029-30- B -237-(170)		163			
2029-30- A -147-(120)	~147	121,5			
2029-30- B -147-(120)		123			
Other dimensions realizable on request					

- Type A : the hemispheric shape facilitates the penetration of guiding tube through the brain
- Type B : the pointed shape facilitates the crossing through dura mater
- Ethylene oxide sterilized / **Single use** / **CE** 1014 marked

Order / Delivery

ALCIS Neuro

2 rue Paul Milleret - 25000 Besançon - France
Tél. +33 (0)3 81 61 69 93 - Fax +33 (0)3 81 53 47 65
@ contact@alcis.net - W www.alcis.net

Medical Devices. Availability of these products might vary from a given country or region to another, as a result of specific local regulatory approval or clearance requirements for sale in such country or region. Always refer to the information on packaging's labels and instructions for use (if applicable). ALCIS reserves the right, without prior notice, to modify the products in order to improve their quality. WARNING: Applicable laws restrict these products to sale by or on the order of a physician. All the references numbers mentioned on this document are CE or CE1014 marked according to European council directive 93/42/EEC on medical devices and its relatives, unless specifically identified as "NOT CE MARKED." Manufacturer: ALCIS – Besançon, France.



ALCIS SARL

ACCESSORIES FOR MICROELECTRODE

Range : 2029-20 et 2029-30

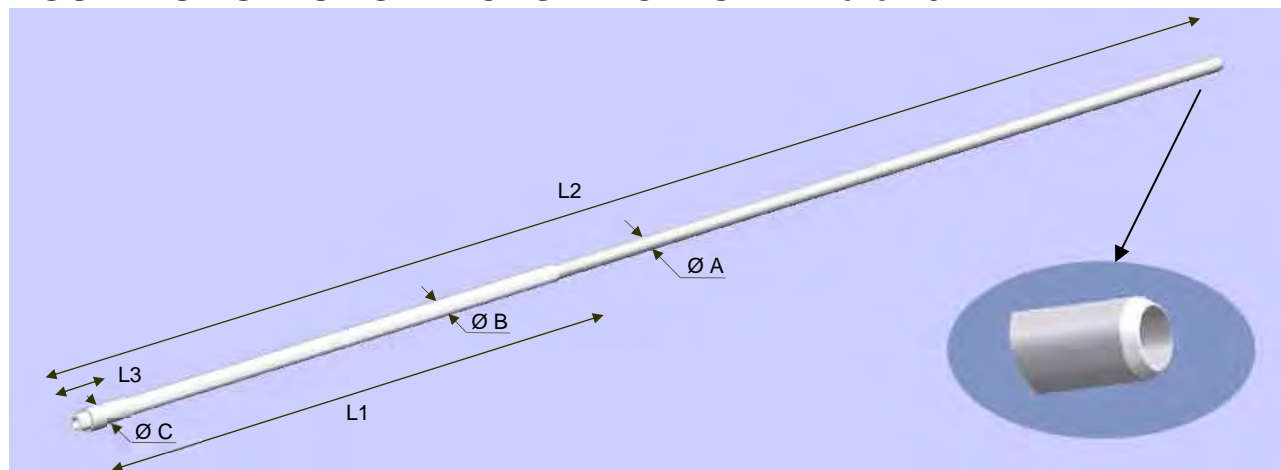
Technical Form

PARKINSON

EDITION 2029-AM-FT8c

Page 1 / 1

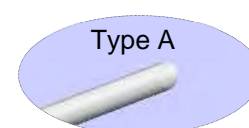
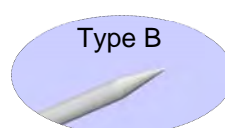
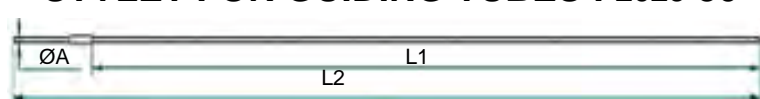
• GUIDING TUBES FOR MICROELECTRODE : 2029-20



Reference	ØA (mm)	ØB (mm)	ØC (mm)	L3 (mm)	L2 (mm)	L1 (mm)	ID (mm)	Packaging
2029-20- A -120-(50)	1,2	1,5	2	5	120	50	0,8 < Ø < 0,9	10 sterile units box (individual packaging)
2029-20- A1 -160-(140)				10	160	140		
2029-20- A1 -170-(140)					170			
2029-20- A1 -210-(140)					210			
2029-20- A1 -210-(50)			50					
2029-20- B -120-(50)		2	2,5	5	120	50		
2029-20- B1 -210-(140)				10	210	140		
2029-20- B1 -210-(50)						50		
Other dimensions realizable on request								

- Proximal part calibrated for insertion in a Ø B hole
- Distal part tipped
- Ethylene oxide sterilized / **Single use** / **CE** 0459 marked

• STYLET FOR GUIDING TUBES : 2029-30



Reference	L2 (mm)	L1 (mm)	OD A (mm)	Packaging		
2029-30- A -237-(210)	~237	211,5	0,8	10 sterile units box (individual packaging)		
2029-30- B -237-(210)		213				
2029-30- A -237-(160)		171.5				
2029-30- B -237-(160)		173				
2029-30- A -237-(170)		161.5				
2029-30- B -237-(170)		163				
2029-30- A -147-(120)	~147	121,5				
2029-30- B -147-(120)		123				
Other dimensions realizable on request						

- Type A : the hemispheric shape facilitates the penetration of guiding tube through the brain
- Type B : the pointed shape facilitates the crossing through dura mater
- Ethylene oxide sterilized / **Single use** / **CE** 1014 marked

Order / Delivery

ALCIS Neuro

2 rue Paul Milleret - 25000 Besançon - France
Tél. +33 (0)3 81 61 69 93 - Fax +33 (0)3 81 53 47 65
@ contact@alcis.net - W www.alcis.net

Medical Devices. Availability of these products might vary from a given country or region to another, as a result of specific local regulatory approval or clearance requirements for sale in such country or region. Always refer to the information on packaging's labels and instructions for use (if applicable). ALCIS reserves the right, without prior notice, to modify the products in order to improve their quality. WARNING: Applicable laws restrict these products to sale by or on the order of a physician. All the references numbers mentioned on this document are CE or CE1014 marked according to European council directive 93/42/EEC on medical devices and its relatives, unless specifically identified as "NOT CE MARKED." Manufacturer: ALCIS – Besançon, France.

This image shows a single sheet of white paper with horizontal ruling lines. The lines are evenly spaced and run across the width of the page. There are no margins, text, or other markings on the paper.

Bât. Bioparc, Témis Santé - 2, rue du Professeur Milleret
25000 Besançon - France
Tél. : 33 (0)3 81 61 69 93 - Fax : 33 (0)3 81 53 47 65
e-mail: contact@alcis.net

Tél. 06 87 73 97 37
e-mail : jpbarnault@alcis.net



Manufacturing / Order / Delivery

ALCIS Neuro

Bât. Bioparc, Témis Santé - 2, rue du Professeur Milleret
25000 Besançon - France
Tél. : 33 (0)3 81 61 69 93 - Fax : 33 (0)3 81 53 47 65
e-mail: contact@alcis.net

Sales contact

Jean-Philippe BARBAULT

Tél. 06 87 73 97 37
e-mail : jpbarnault@alcis.net